

PROJECT ABSTRACT

Shakopee is a historic riverfront city rich in cultural history, physical and ecological resources, and features a booming population of active and involved citizens who care deeply about the future of their community. The purpose of the Parks, Trails, and Recreation Master Plan is to guide the future planning efforts for public park spaces and trails within the City of Shakopee by providing a comprehensive vision and framework for staff and elected officials to use to plan, build, communicate, build partnerships, and strategize about how the city's parks will guide the vision for the future of Shakopee that citizens will continue to cherish.



PROJECT NARRATIVE



The City of Shakopee, a suburb of Minneapolis along the Minnesota River, is currently experiencing tremendous expansion in development, population density, and diversity. The City finds itself at a critical moment where it must ensure that the visioning and planning for the future of the parks, trails, and recreation system takes into account this growing and changing populous and the evolving trends in recreation that people want to participate in. The Parks, Trails, and Recreation Master Plan provides a 271-page comprehensive vision and framework for staff and elected officials to use to plan, build, communicate, and strategize about how parks can guide the vision for the future of Shakopee that citizens will continue to cherish. It is intended to compliment Envision Shakopee, the City's award-winning 2040 Comprehensive Plan.

Specifically, the goal of this Master Plan was to develop a park system that serves the people, is responsive to changes in recreational trends, comes from a place of cultural understanding, and is flexible to meet a growing metropolitan region while still retaining Shakopee's unique character. It provides guidance on prioritizing planned improvements and sets a framework for projects moving forward in a unique way: by outlining collaborations and partnerships among key groups that would be able to provide unique perspective and insight.

This document is composed of five parts that together form a cohesive vision for a robust parks system: introduction and planning process, needs assessment, system vision, park and trail planning, and implementation. Key themes identified include amplifying the connection the Minnesota River, public and private partnerships, new and innovative facilities, natural areas, trails and connections, and park accessibility and programming.

The Landscape Architects led the development of this document as the lead consultant of the planning team, with the support of a park and recreation planning consultant, a community engagement specialist, and in partnership with City staff and leadership. Staff from the City of Shakopee did extensive work in contributing to the document by providing data, past work, and review. Additionally, a Committee made up of Advisory Board members, City staff, City Council members, City residents, and business owners provided input on vision and priorities for the Master Plan. In addition to the creation of an overall system vision, the Landscape Architects created design proposals for five crucial parks and trails within the city: The Riverfront, Huber Park, Memorial Park, Lions Park, Vierling Greenway, Quarry Lake Park, and Windermere Parks Plan, with the intent that these key spaces will be prioritized in (re)development.

One key challenge that this Master Plan process revealed was the history of parkland development and discordant uses along the riverfront in Shakopee. Special attention was paid to the parks and natural spaces along the Minnesota River, and the relationships and desires among the diverse groups that have special and deep history with the riverfront in Shakopee. Through the development process of this Parks and Trails Master Plan, the City of Shakopee and the Landscape Architects also worked collaboratively with the Shakopee Mdewakanton Sioux Community (SMSC) on a Riverfront Master Plan and concept plan for Memorial Park and The Landing, a historic living museum. With its location along the Minnesota River, the Shakopee area has been home to indigenous communities for centuries. The intertwined history of trade, learning, conflict, and growth amongst various groups is most evident today where a City park space encompasses indigenous burial mounds and trail users navigate long erased village sites. The Landscape Architects

PROJECT NARRATIVE CONT.

were critical in launching conversations between the City, Dakota representatives, and other County and State groups to form a special vision for a Cultural Corridor along the riverfront. In this vision, all parties invest to return the park surrounding the burial mounds into a passive and naturalized space, renovate the riverfront trail to feature story-telling nodes at key locations, and ensure that the shared history of the Dakota and European settlers is told through interpretation and landscape.

A robust and intentionally developed community engagement phase helped to inform the critical defining vision for the Master Plan. The parks concepts in the Master Plan directly reflect the community's desires and vision. The Landscape Architects worked closely with City staff to ensure that realistic timelines and budgets are tied to this vision so that implementation makes sense and is achievable for Shakopee. This document is intended to be visionary, but within reach. Overall, this project is intended to set goals and expectations for the future improvement and expansions of the parks, recreation, and trails systems within Shakopee.

"I encourage every resident to read this document. It's in depth. It's big. It's bold. It's designed to be that. Seek to understand and seek to learn in our community."

"I appreciate the work and the depth of the questions, and the work that has gone in to asking the community and engaging the community."

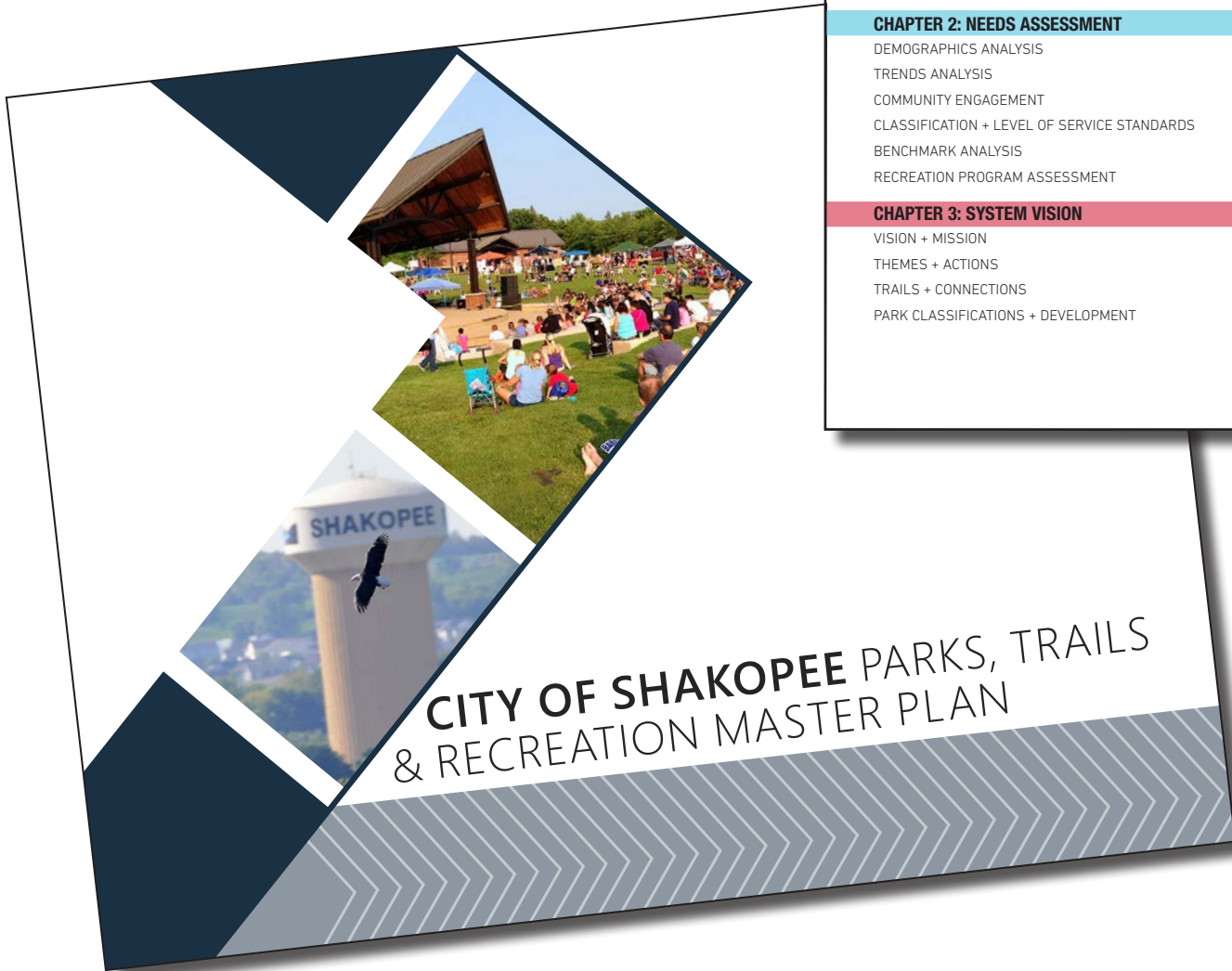
"This is a visionary long-term plan."

- Shakopee Mayor Bill Mars, upon approval of the PTR Master Plan by City Council



DOCUMENT THEME

The Shakopee Parks, Trails, and Recreation Master Plan was designed to be a companion document to the City's 2040 Comprehensive Plan, *Envision Shakopee*. The chevron design and color palette were inspired by the comp plan, but made unique so that the Master Plan could also act as a stand-alone document.



CONTENTS

CHAPTER 1: INTRODUCTION + PLANNING PROCESS 7

THE ROLE OF PARKS AND RECREATION	8
INTRODUCTION + DOCUMENT PURPOSE	10
RELATED DOCUMENTS	17
HISTORY	23
PARALLEL PROCESSES	27
MASTER PLAN PROCESS	28

CHAPTER 2: NEEDS ASSESSMENT 31

DEMOGRAPHICS ANALYSIS	33
TRENDS ANALYSIS	42
COMMUNITY ENGAGEMENT	57
CLASSIFICATION + LEVEL OF SERVICE STANDARDS	85
BENCHMARK ANALYSIS	88
RECREATION PROGRAM ASSESSMENT	90

CHAPTER 3: SYSTEM VISION 95

VISION + MISSION	96
THEMES + ACTIONS	97
TRAILS + CONNECTIONS	105
PARK CLASSIFICATIONS + DEVELOPMENT	118

CHAPTER 4: PARK + TRAIL PLANNING 161

THE RIVERFRONT	170
MEMORIAL PARK + THE LANDING	198
LIONS PARK	210
QUARRY LAKE PARK	214
VIERLING GREENWAY	220
WINDERMERE PARKS	230

CHAPTER 5: IMPLEMENTATION 247

USING THIS DOCUMENT	249
FUNDING + REVENUE STRATEGIES	257
MAINTENANCE + OPERATIONS OVERVIEW	263

APPENDICES

APPENDIX A: OPERATIONAL ASSESSMENT	
APPENDIX B: FINANCIAL ASSESSMENT	
APPENDIX C: PROGRAM ASSESSMENT	
APPENDIX D: BENCHMARK ANALYSIS	

DOCUMENT ORGANIZATION

The PTR Master Plan is organized into five chapters that out of research, community engagement, data analysis, and visioning, build a robust and easy-to-implement plan for the park and trail system. A deeper dive into select parks/trails is explored. The final chapter illustrates realistic implementation strategies for the PTR Master Plan.

1 INTRODUCTION + PLANNING PROCESS

This chapter lays the groundwork for the purpose and intent of this document, and where the document fits into the relevant context of other planning processes or previously completed documents. The history of the City is explored to provide background on historical references.

2 NEEDS ASSESSMENT

In the data driven needs assessment chapter, the overall City demographics are analyzed, recreation trends are identified, the community engagement process is discussed and analyzed, and the overall state of the parks and recreation system is analyzed.

3 SYSTEM VISION

Through the master plan process involving conversations with stakeholders and the public, as well as analyzing national and regional trends and data, a vision is presented for the parks, trails, and recreation system of Shakopee moving forward.

4 PARK + TRAIL PLANNING

Chapter 4 lays out the park and trail system, then dives deeper into select parks that have been identified as candidates for taking a look at updating their layout and facilities. Concept plans for these select parks including parks along the riverfront and a large new development are detailed in this chapter.

5 IMPLEMENTATION

Looking forward to how all of the information and recommendations in this book are implemented, chapter 5 outlines a timeframe and budgetary framework for improvements.

EXISTING CONDITIONS +

PROPOSED PARK PLAN + NARRATIVE

DESIGN CHARACTER

QUARRY LAKE PARK 6201 INNOVATION BLVD.



214 SHAKOPEE PARKS, TRAILS, AND RECREATION MASTER PLAN | PARK + TRAIL PLANNING

EXISTING PARK CONDITIONS (AND CONTEXT)

- ACTIVE LINCOLN PACIFIC HEAVY RAIL
- QUARRY LAKE PARK VEHICULAR CONNECTION FROM INNOVATION BLVD
- VARIOUS INDUSTRIAL FACILITIES
- HIWAY 169
- SOUTHBRIDGE NEIGHBORHOOD
- SOUTHBRIDGE COMMUNITY PARK AND DOG PARK
- ICEL ENERGY POWER STATIONS
- SPITANOUS ROADWAYS STORAGE FACILITY
- SPITANOUS PARKING LOT FOR QUARRY LAKE PARK
- FISHING PIER AND PARK PERGOLA STRUCTURE WITH PICNIC TABLES
- KAYAK LAUNCH BEACH
- FOOTBRIDGE CONNECTION OVER STORMWATER CHANNEL
- GRAVEL SERVICE ROAD
- WATER SKI TEAM BOAT SLIPS AND BOAT RAMP
- STORMWATER RETENTION FACILITIES FROM INDUSTRIAL AREA
- STORMWATER CHANNEL
- TRAIL CONNECTION TO FUTURE 10TH AVE TRAIL

EXISTING PARK CHARACTER AND HISTORY

In the land of over 10,000 lakes, Shakopee was recently able to add one more body of water to its park system roster. The recent acquisition of Quarry Lake Park has great potential to add another layer of regional attractions to the City's already impressive array of local attractions.

Not a naturally occurring lake, Quarry Lake was formed by gravel quarrying operations that began in the 1950s, triggering an underground spring to fill the excavated land with fresh water. The spring continues to feed the lake with fresh water today.

At just over 100 acres, this park was acquired by the City in 2005, with improvements ongoing since 2014. These improvements have thus far been comprised of building a vehicular bridge connection to a new surface parking lot off of Innovation Boulevard, a pedestrian bridge connection into the park over the stormwater channel to 12th Ave (where a future trail connection is being planned to connect to Hwy 93), a fishing pier, and

a pergola structure. Awards and grants from the Shakopee Midekwanton Sioux Community and the State/DNR have made a lot of these improvements possible.

Quarry Lake is regularly stocked by the Minnesota Department of Natural Resources and both trout and bass are stocked and have been a Dispersed Trout Lake since May of 2018. Visitors can expect a healthy stock of trout in the lake, as thousands of yearling trout are stocked on an annual basis. Fishing and non-motorized watercraft are allowed in the northeast portion of the lake, demarcated by water buoys. A portion of the lake is reserved at most times by a local water skiing club, so users of the lake must be aware of motorized boats and water skiers at all times.

The main and overarching group of users of Quarry Lake is the Shakopee Water Skiing team, who has contractual rights to use the lake for practice and shows for years to come. Water skiing can be a directly incompatible activity to non-motorized boating or pier fishing, creating large wakes on the lake and using a large amount of the lake surface. Incompatible uses aside, the water ski club does attract potential users to the park with their open invitations to water shows and regular learn-to-water-ski classes that are open for the public to sign up for at a cost.

Overall, even after the improvements done to date, the existing character of Quarry Lake Park is one of isolation and incompleteness. With a simple fishing pier and sole pergola structure, there is not much for a park user to do once arrived at the park if one is not interested in observing water skiing or fishing from the pier. There is no path circulation system around the lake, and the kayak launch beach is rather challenging to find and carry a kayak to. The park is isolated from most of the surrounding community by a heavy rail line, industrial and warehouse businesses, and a large highway surrounding the park. There are no existing pedestrian connections to the park, and it is hard to find in a vehicle.

There are many opportunities to create a sense of place and purpose in this park that would be cost-efficient, create partnerships with surrounding businesses, and fill gaps in services available in the City.

QUARRY LAKE PARK CONCEPT PLAN



216 SHAKOPEE PARKS, TRAILS, AND RECREATION MASTER PLAN | PARK + TRAIL PLANNING

QUARRY LAKE PARK CONCEPT PLAN

The master plan design for Quarry Lake Park creates a destination 1.5-mile looped trail system around the fresh spring lake. A proposed natural surfacing material would maintain a softer aesthetic, and keep the cost of the trail at a minimum compared to a paved surface. This loop is a reflection of consistent themes heard through public engagement sessions where park users have voiced the desire to have more looped trail systems, and access to the natural environment. A looped trail system has also been portrayed in previously approved concept plans for the park. To expand on the potential of a connected trail system in the park, the lake loop would link to and be a part of a mountain biking system on the outer perimeter of the park.

The City of Shakopee currently does not have a multi-mile dedicated mountain biking trail facility. Adjacent to Quarry Lake Park on the south and east sides of the park is a significant amount of mixed wooded and open land that is underutilized, belonging to Xcel Energy. It is recommended that the City partner with their energy neighbor who has shown excitement about the opportunity to be a good steward in their community and allow low-impact use on their property. By weaving a mountain bike trail through this underutilized Xcel property, over four miles of varied trail can serve a variety of events, from high school races to a full afternoon of challenging exercise for everyday park users. A quality trail system would have a regional draw and complement other proposed improvements at Quarry Lake Park.

As a part of a separate project, a trail connection to 12th Ave/Green Valley Business Park is currently being constructed by the City. It is recommended that this trail be brought into Quarry Lake Park via a unique wetland experience. This could be achieved by naturalizing and enhancing the stormwater area west of the park, to serve park users, bring some naturalization and habitat to the area, as well as provide an outdoor respite for employees that work in the warehouses adjacent to the area.

One imperative connection recommendation that would greatly serve the community is a proposed pedestrian bridge over Highway 169. This bridge has been identified as an important non-motorized connection in Emvion Shakopee to alleviate the greatly limited pedestrian connections to the park. The Southbridge neighborhood is the closest residential development

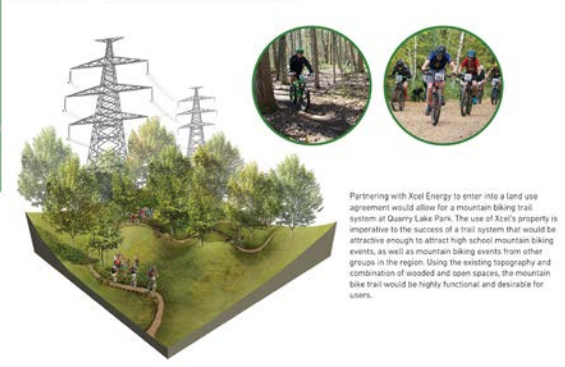
and community to Quarry Lake Park, but is physically disconnected from this great amenity. Currently, a resident who lives in the center of Southbridge (just over half of a geographic mile from Quarry Lake Park) would have a 10 to 15-minute drive in their vehicle to get to the park. This same park user would have a 1.5-hour walk, or a 30-minute bike ride to the park. A pedestrian bridge would provide a direct, safer connection for park users from this community and other nearby potential users, turning a 1.5-hour walk into a 20-minute walk. At a higher level, these connections are especially important as the City creates more miles of trail system to reinforce existing trails and develop accessible connections to get frequent users to the park. Further, Highway 169 will remain a barrier to trail users in existing and future communities on the greater east side of Shakopee until a better pedestrian connection is created.

The water ski associations will be using Quarry Lake for the foreseeable future. The group brings a buzz to the park with their regular members and by attracting the public who come to watch their performances. Planning for an improved boat launch and viewing area for spectators on the cove of the lake would be a positive enhancement to the park. Because the water skiing portion of the lake is restricted for non-motorized boat users, a more relevant location for the kayak launch would allow easier access for canyons or kayakers to launch from, and provide a point of access for people to interact with the water from, potentially becoming a beach in the future. Pulling back the topography of the lake edge at the identified location would provide an easier transition to the water from the parking lot for water users.

Adding additional amenities such as a play feature, obstacle course, and a pavilion to improve the picnic area near the existing pergola structure would provide for a more extensive park experience. Restroom facilities will be provided in the picnic pavilion, and whether permanent or portable, should also continue to be provided in the south portion as the park develops.

Quarry Lake Park is also a great candidate for the new home of the Vainu-men helicopter and granite-based flag monument currently located at Memorial Park. Users can observe the historic chopper in a prominent location while visiting the park, with more space available in this location for gathering and events related to the helicopter and flag. Intentional landscaping would frame these special community elements.

QUARRY LAKE PARK CONCEPT PLAN CONT.



218 SHAKOPEE PARKS, TRAILS, AND RECREATION MASTER PLAN | PARK + TRAIL PLANNING



219 SHAKOPEE PARKS, TRAILS, AND RECREATION MASTER PLAN | PARK + TRAIL PLANNING

EXISTING CONDITIONS STUDY

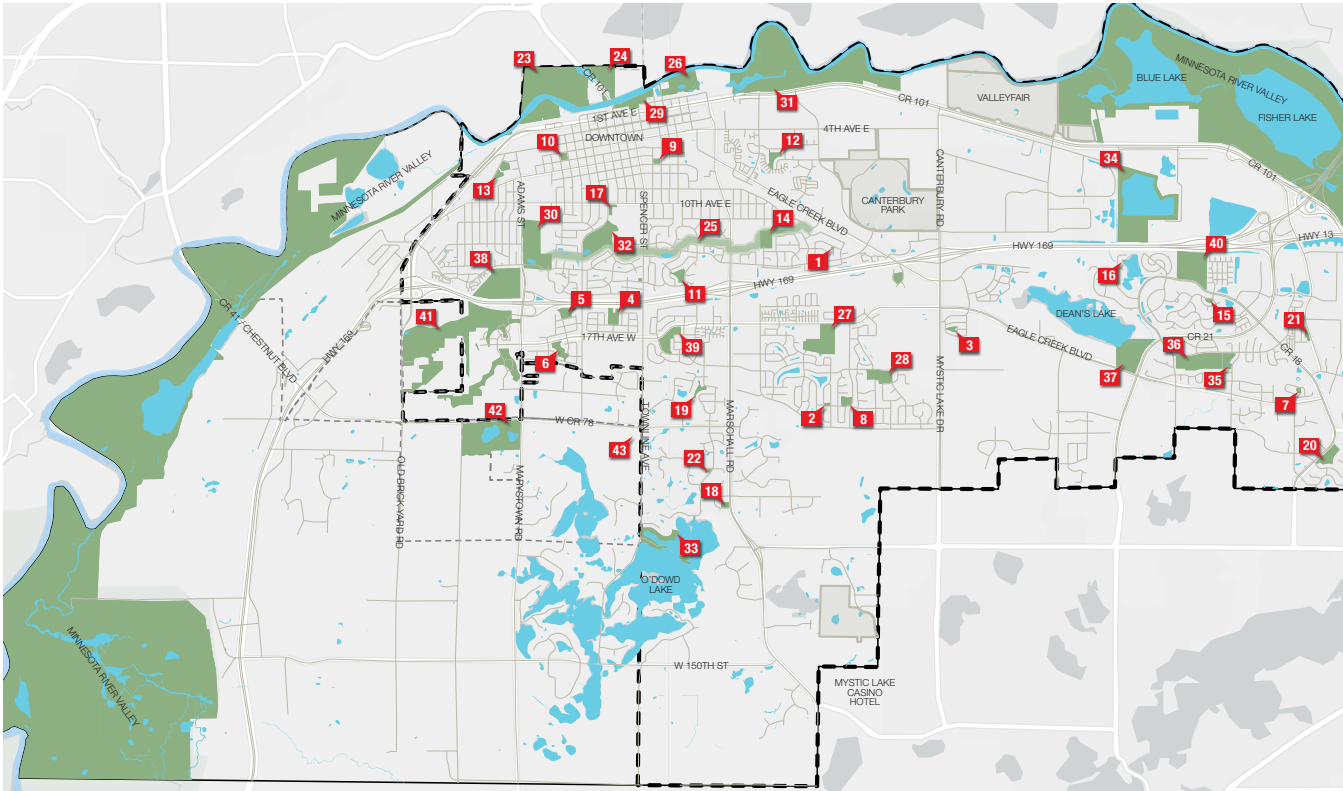
Shakopee's current park system is extensive and pretty well spread throughout the City, however the system is out-dated and in need of a fresh vision. Unrealized trail corridors, prototypical neighborhood parks, seasonal flooding, and expanding development calls for a close study of existing conditions and where potential exists for focused areas of new and improved concepting.

- | | | | |
|----|-------------------------|----|---|
| 1 | Emerald Lane Tot Lot | 23 | Archery Range |
| 2 | Pheasant Run Tot Lot | 24 | Boat Launch |
| 3 | Langdon Terrace Park | 25 | Vierling Greenway (Drainage Way Trail)* |
| 4 | Royalty Park | 26 | Riverfront Cultural Trail* |
| 5 | Hackney Park | 27 | 17th Avenue Sports Complex |
| 6 | Saddle Ridge Park | 28 | Green Meadows Park |
| 7 | Glacier Park | 29 | Huber Park |
| 8 | Cloverleaf Park | 30 | Lions Park |
| 9 | Hiawatha-Wermerskirchen | 31 | Memorial Park |
| 10 | Holmes Park | 32 | Muenchow Fields |
| 11 | Meadows Park | 33 | O'Dowd Lake Park |
| 12 | Prairie Bend Park | 34 | Quarry Lake Park |
| 13 | Riverview Park | 35 | Riverside Fields |
| 14 | Scenic Heights Park | 36 | Ridge Creek Park |
| 15 | Hamlet Park | 37 | Shutrop Park |
| 16 | Savanna Oaks Park | 38 | Tahpah Park / Joe Schleper Stadium |
| 17 | Stans Park | 39 | Westminster Park |
| 18 | Timber Trails Park | 40 | Southbridge Park |
| 19 | Autumn Hill Park | 41 | Windermere Parks* |
| 20 | Whispering Oaks Park | 42 | Jackson Township Park (fut. annex) |
| 21 | Stagecoach Park | 43 | Shakopee Schools Athletic Center |
| 22 | Prairie Meadows | | |

- * - Proposed / Future Parks
- - Updated or New Concept Plan Provided in Master Plan



CURRENT SHAKOPEE PARKS OVERVIEW MAP



ENGAGING THE COMMUNITY

Engagement events were held throughout Shakopee, using feedback boards and mailers that residents could use to voice their preferences, thoughts, and ideas about their parks system. An intentional engagement with minority populations was also a part of the engagement phase to ensure that voices of the less-often heard, yet growing populations were included in the process.

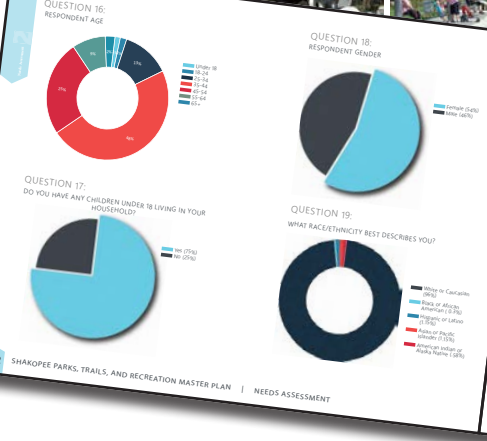


EXISTING

WHAT TYPES OF FACILITIES DO YOU AND YOUR FAMILY USE CURRENTLY?
PLACE 5 DOTS ON IMAGES BELOW.

PARK AMENITIES NEW/ IMPROVE

WHAT AMENITIES WOULD YOU AND YOUR FAMILY MOST LIKE TO USE?
PLACE 5 DOTS ON IMAGES BELOW.



QUESTION 18: RESPONDENT GENDER

Female (64%)	36%
Male (36%)	64%

QUESTION 19: WHAT RACE/ETHNICITY BEST DESCRIBES YOU?

White (50%)	50%
Black or African American (25%)	25%
Hispanic or Latino (15%)	15%
Other (10%)	10%

MINORITY POPULATIONS ENGAGEMENT

Shakopee is committed to growing quickly compared to similar communities throughout the metropolitan area and state. Diversity will increase over the next decade as more immigrant groups and first and second generation residents move to Shakopee in search of employment opportunities, diversity of housing options, and other economic and social reasons.

Understanding this, Shakopee used this master plan as an opportunity to reach out to these traditionally under-served community members to get their input for the vision of their Parks, Trails and Recreation Master Plan.

A consultant was hired to lead the "Community Connectors" efforts with the goal was to engage users of parks and trails, and also non-users, in an inclusive process. It was critical to include representation of the diverse racial and ethnic groups including immigrants and refugees, people living with disabilities and low income households, and the inclusion of these voices would contribute to the Shakopee's goal of the being a "community self plan." The following groups were discussed as minority populations because a separate program was undertaken to ensure their voices were heard.

Groups selected for engagement:

- South Asian
- Latino (both US born and immigrants included)
- Blackian
- Spanish
- Low Income
- Persons Living with Disabilities

METHODOLOGY

The under-represented populations were selected by researching county resources including maps and school data from state and Shakopee's demographic data. A review of available data from state and county resources, including maps and school data, was used to input and from representative communities and those who are knowledgeable about minority populations living in Shakopee. The final decision on the specific sites was made with input from the project team and City of Shakopee.

APPROACH TO COMMUNITY ENGAGEMENT

The primary approach to community engagement utilized a unique framework which has been very successful and yields superior results, and we consider to be more authentic. This means the approach was customized to each respective community, was participatory, and knowledge, ideas, interests and concerns. The work has a strong cultural element, allowing for more effectively connecting across cultures to learn that create an environment of trust.

LIMITATIONS OF THE DATA

The consultant team sought to engage the six key communities of priority underrepresented populations identified, being power/whole participation and voice may be.

The self-participant selected to engage in this work believed that due to the employment activities with commuting these particular groups have less opportunity to be more active in a group setting with Latinos had. "People have become so afraid they don't even trust the 'church'."

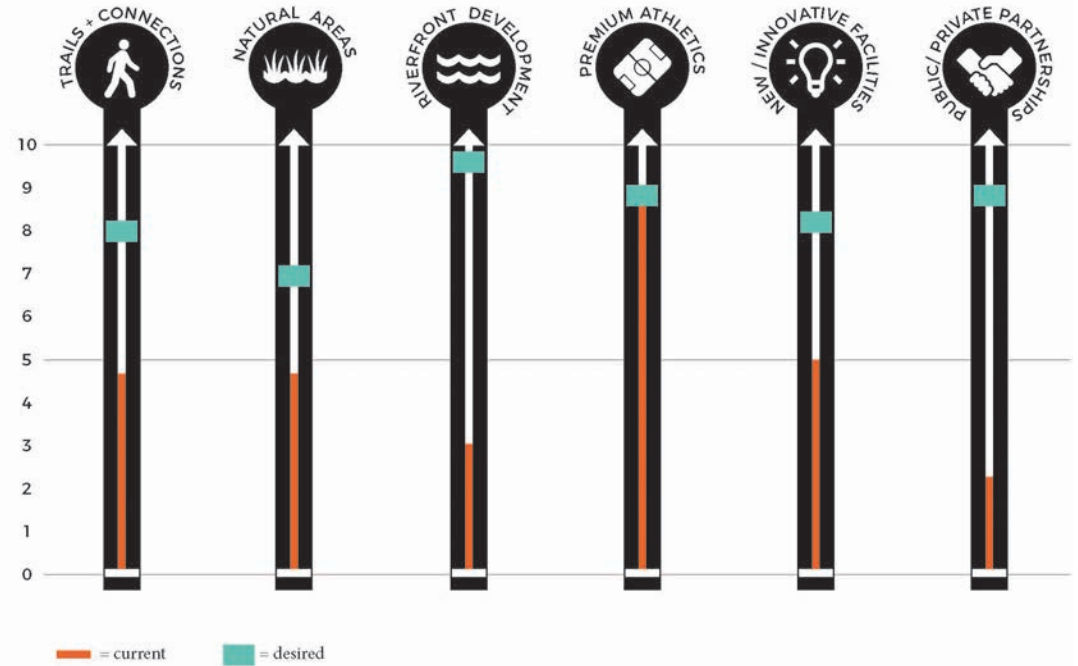
The PCM team has conducted thousands of similar groups, and is known for the capacity to build trust, but it had not been previously. There were 50 people who took more time, creativity and relationship building to accomplish the community engagement. Mixed methodologies

THEMES + VISIONING

Through the engagement process, a series of priorities were identified by the community that inspired and began to form the themes of the Master Plan. Final Themes are listed below:

- » **Riverfront Connections**
- » **Public / Private Partnerships**
- » **New / Innovative Facilities**
- » **Premium Athletics**
- » **Restoring Natural Areas**
- » **Trails + Connections**
- » **Park Accessibility + Programming**

KEY THEMES IDENTIFIED BY PARKS AND TRAILS ADVISORY COMMITTEE COMPARING CURRENT STATE OF PRIORITIES VS. WHERE THE CITY DESIRES TO BE



THEME
Riverfront Connection – The riverfront is Shakopee’s signature feature. Maximize access to the river’s banks and waters and make the river part of the historic downtown’s experience. Rediscover the river and the community’s intricately shared history.

ACTIONS

- » develop riverfront parks into premier facilities.
- » build partnerships to make significant investment in riverfront redevelopment.
- » create infrastructure and programs to celebrate the riverfront’s history and significant cultural and natural resources.
- » provide safe access points to the water, and safe routes on riverside trails.
- » enhance pedestrian crossings across 101 from downtown to create inviting, safe, and traffic calming access points to the river.
- » highlight the historic bridge as a city treasure and find ways to integrate it into residents and visitors’ daily lives.
- » adapt to the river’s dynamic nature and create a riverfront park more resilient to flooding, bank erosion, and droughts.
- » improve the ecological services provided by the river by protecting the riverbank, cleansing stormwater throughout the parks, and restoring natural habitats and native landscapes.
- » integrate consistently branded wayfinding and interpretive signage - create a riverfront ‘district’.
- » create a local water trail along the riverfront in downtown that complements the state water trail.

RIGHT: EXAMPLE OF ACTIVATED RIVERFRONT IN SODA FALLS, SD

THEME
Public/Private Partnerships – The City’s strong business climate should be leveraged to develop new models of financial partnerships in the parks that will strengthen financial stability. Team with agencies, non-profits, and user groups to initiate innovative infrastructure and programming.

ACTIONS

- » evolve relationship with Shakopee Public Schools to reflect current costs and benefits, shared

THEME
New/Innovative Facilities – Transform the park and recreation system to meet existing and new trends, changing demographics, and opportunities for regional attractions where feasible. Build upon Shakopee’s history of innovation by identifying trends and opportunities.

ACTIONS

- » continue to communicate with citizens using polling, surveys, and interviews to understand changing needs.
- » strengthen and develop relationships with minority populations. regularly communicate and build trust with changing demographics.
- » develop a signature playground at Huber Park that will be a regional attraction.
- » focus on new facilities for non-traditional athletics that attract new park users including trending activities that were highly requested by the public; mountain biking, climbing, nature play.
- » develop community driven master plans for community parks that are designed by licensed landscape architects with strong park design experience.
- » not just replace, but update older facilities with improved and innovative facilities to stay relevant and be competitive with surrounding (competing) cities.
- » prioritize ADA accessibility when renovating parks or replacing equipment.
- » continue to evolve programming to capture new park users and provide something of interest to all residents.
- » adjust O&M staff to ensure maintenance needs are met.
- » develop business plans for key community parks and park infrastructure and programming.

RIGHT: EXAMPLE OF MODERN AND INNOVATIVE PLAY STRUCTURE

THEME
Premium Athletics – Shakopee’s high-quality facilities are able to support extensive league use and tournament hosting. This important tradition should be protected, enhanced, and strategically improved to continue meeting the needs of residents.

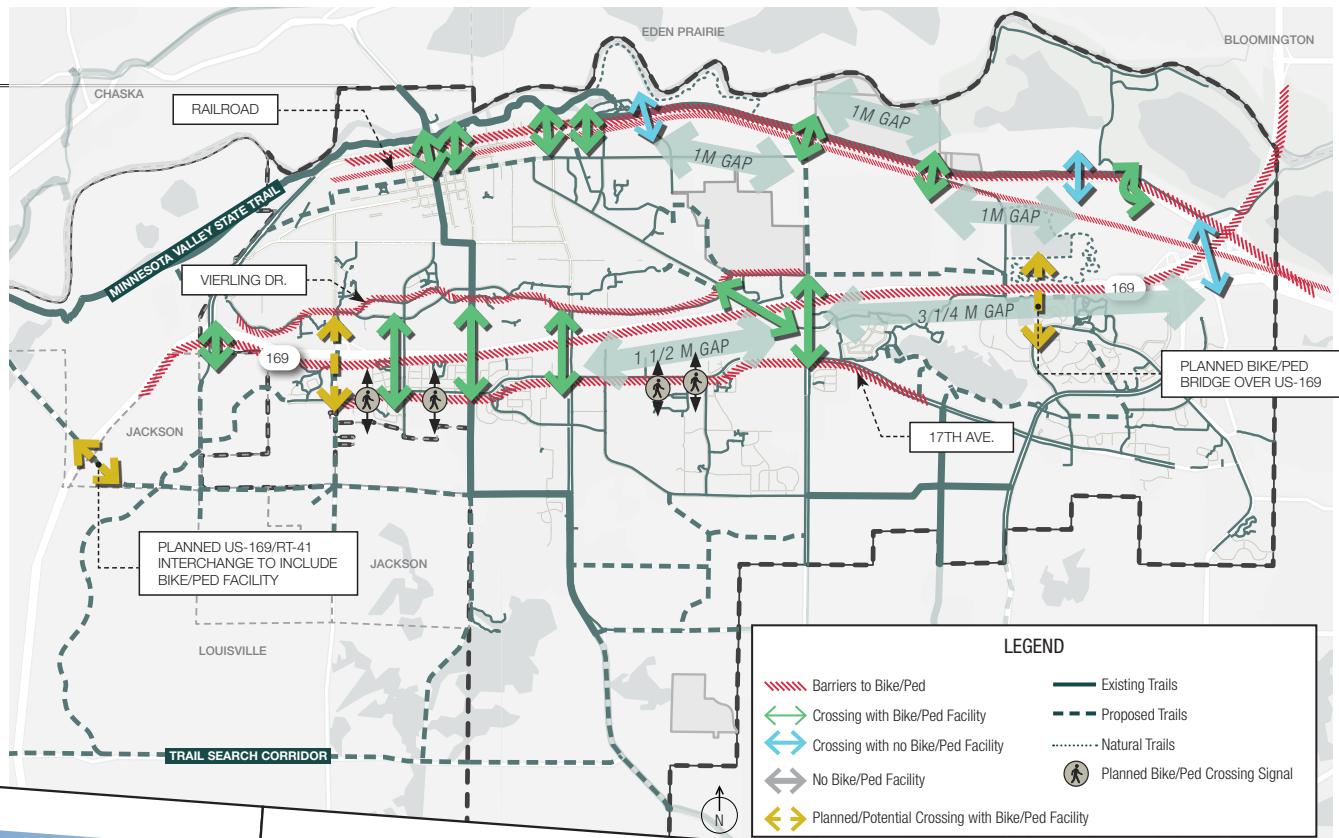
ACTIONS

- » create business plans for key indoor and outdoor facilities to ensure long-term investment and operational success.
- » develop programming plans to maximize premier indoor and outdoor facility usage and track space efficiency for indoor facilities.
- » provide adequate staffing for operations and maintenance of facilities.
- » continue to refine and develop marketing materials and communications to highlight the excellent facilities to others.
- » continue hosting regional and state-wide events and tournaments at premier facilities and explore new event opportunities (MN Ironman Bike Ride).
- » continue to collaborate and evaluate working relationships with Shakopee Public Schools to strengthen the system and meet needs.
- » explore opportunities to develop new facilities that are highly desired but not available in the area - mountain biking.
- » continue working with athletic associations to match facilities with needs and balance usage fairly.
- » consolidate outdoor ice facilities to reduce maintenance needs and provide critical mass. Continue to monitor usage and adjust while adding popular complementary winter facilities such as broomball and pleasure skating rink near downtown.
- » develop maintenance standards and work order system to efficiently maintain facilities, especially as the system grows.

RIGHT: EXAMPLE OF OUTDOOR PICKLEBALL COURT

CONNECTIONS MAPPING

Extensive analysis was completed in mapping trail and sidewalk connections, winter trails, park dispersement, natural resources, recreation facilities, playgrounds and play areas, picnic and gathering areas, all types of sports fields/courts/rinks, and restroom facilities. Overlaid, these maps began to identify gaps and opportunities for the overall Master Plan to inform areas of focus.

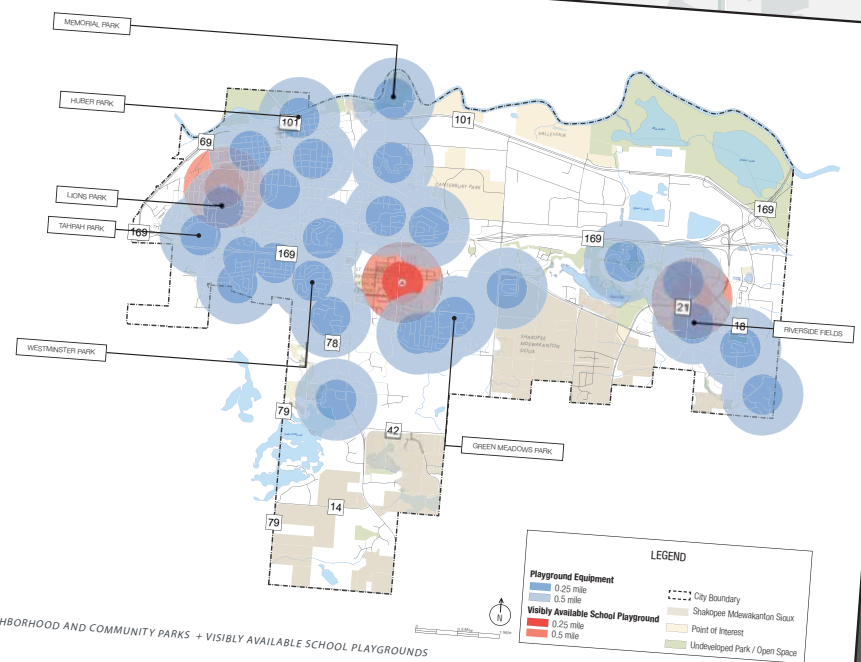


PLAYGROUNDS/ PLAY AREAS

Play areas should occur in every neighborhood as a safe place for families to gather, recreate, and exercise. A diversity of play spaces throughout the city and in adjacent neighborhoods should be utilized to encourage different play experiences and travel between neighborhoods. Higher density areas and/or well connected trail systems should support a more complex, intricate playground or play area.

The following system wide recommendations for play areas include:

- » Provide ADA accessibility opportunities in all play areas per current universal design standards.
- » All play areas should have seating and shade opportunities for caretakers.
- » Evaluate the cost benefits of requested park facilities, explore the use of trial amenities to gauge interest level prior to larger construction projects - e.g. Gaga ball pits at playgrounds.
- » Provide distinctly different play experiences for parks that are within 1/2 mile of each other and/or well connected by sidewalks or trails.
- » Consider 1 or 2 playground manufacturers to provide equipment. Repair parts and maintenance will be easier and more efficient over the long-term.
- » Incorporate nature play and adventure play into the system, distribute throughout the city.
- » Collaborate with additional play providers such as schools and neighborhood associations for programming and to fill gaps.
- » Include a licensed landscape architect in the design and planning for any major playground replacements in neighborhood parks and for all community parks.



THE RIVERFRONT

As the Landscape Architect began conceptualizing for the Shakopee Riverfront, a parallel process was born with the Shakopee Mdewakanton Sioux Community (SMSC) to take a special design lens to the riverfront. Layered with cultural history, the Riverfront concept plan incorporates a process that combines priorities from various stakeholders.

SENSE OF PLACE - SIGNAGE

Important to the identity of a park or trail is how wayfinding and general information is presented. In Chapter 3, we suggested creating signage and wayfinding standards for the entire park system. Building off of these standards, a unique character can be added to the Shakopee Riverfront Cultural Trail's signage and wayfinding to give it a stand-out sense of place. This character should be developed with the partnership of the SMSC, and with the knowledge that ground-penetrating signage and elements should not be installed along the riverfront. Archaeological records indicate that below-ground cultural resources exist up and down the riverfront in this entire area, and any footing/foundation that penetrates the ground has the potential to further disturb these resources that have already seen devastation. An example of how to do signage in this area is shown below - perhaps a simple monolithic boulder with the signage attached to the face so it can be changed out as messaging updates need to be made.



NON-GROUND-PENETRATING SIGNAGE RESPECTS THE CULTURAL RESOURCES IN THE AREA.

INTERPRETIVE NODES

Designated places for trail users to stop off of the main trail and sit, eat a snack, or read a more involved interpretive sign will draw more users to the trail and make the experience more comfortable for users. Traditional nodes like this have comfortable elements such as a bench, wayfinding or interpretive signage, and shade for respite.



TRAIL NODES PROVIDE AREAS OF RESPIRE, INTERPRETATION, OR RELAXATION WITH A VIEW.

ETIQUETTE SIGNAGE

Due to the sensitive cultural and spiritual resources along the riverfront, keeping trail users on designated paths is imperative for the preservation of this important place. Reminding people to stay on the trail and not wander into burial grounds, over foundation ruins of old sites, or onto private property can be done through signage at important nodes or entrances to the parks and trails along the riverfront. These signs should make people aware that they are in a sensitive cultural area to encourage the best behavior for park and trail users.



SIGNAGE CAN GENTLY REMIND PEOPLE TO STAY IN DESIGNATED AREAS AND ON DESIGNATED PATHS.

INNOVATIVE TECHNOLOGY TO TELL STORIES

The City of Shakopee, the SMSC, and Three Rivers have all shown great interest in being at the forefront of new and innovative technologies that enhance the user's experience of using parks and trails in the riverfront area. In Chapter 2, this type of technology was discussed at a city-wide level as an emerging trend, but can be more strategically implemented along the Riverfront Cultural Trail to bring some of these historical stories to life. Augmented reality can show users what the restored oak savanna will look like 80 years from now, or how Native Americans used the land for farming.

A trail user can scan a QR code on a trail sign and be guided through a historical narrative or lesson from a historian, staff member from The Landing, an actor, etc. right from their phone or tablet. These augmented reality sessions could range from a scenic relaxing day in a village, or an exciting event such as a ferry boat landing for the first time at Holmes Landing. For those without access to the required technology for this type of augmented reality, more artistic approaches to interpretive signage can be present on the trail, such as transparent panels that have etchings or sketches of a scene from the past.

This type of system will require a cohesive and organized effort between all land owners and interest groups, as explored in the following pages.



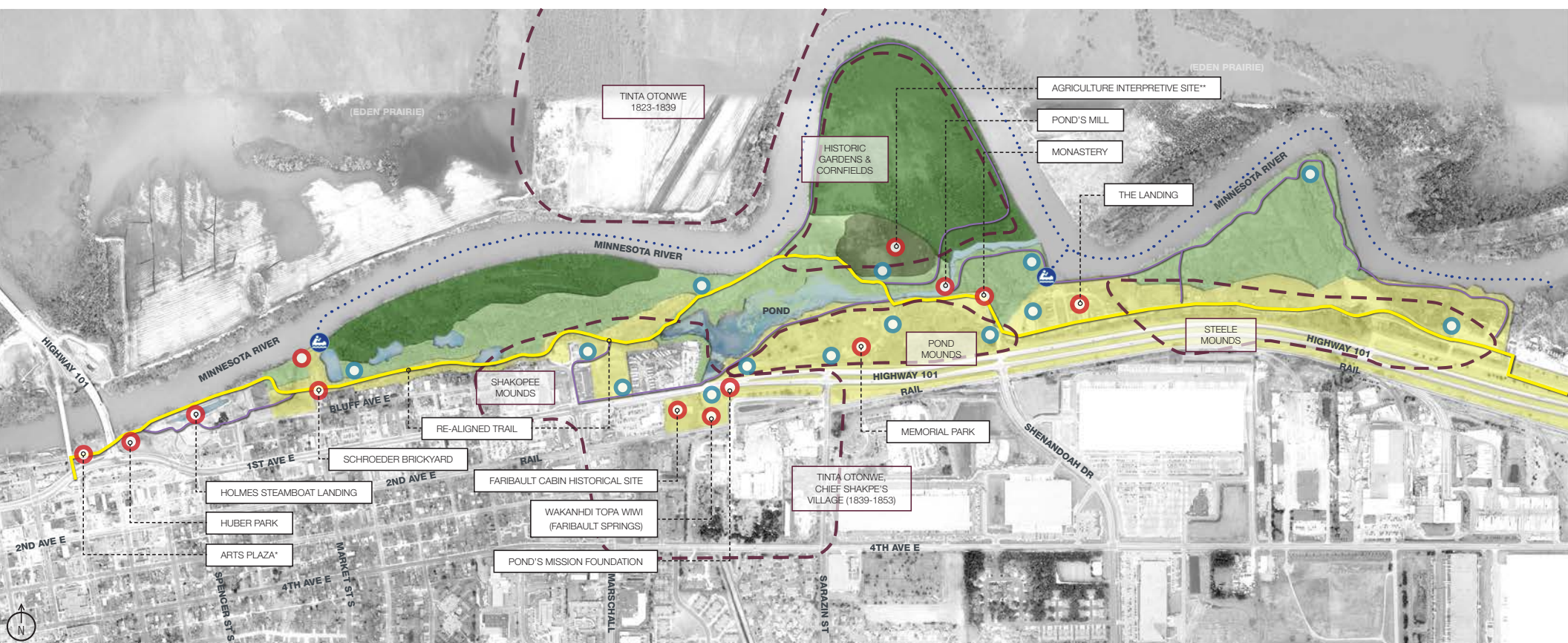
VARIOUS TYPES OF AUGMENTED REALITY TO BRING THE HISTORY OF THE RIVERFRONT TO LIFE.

- = kayak launch* **
- = main interpretive site
- = point of etiquette reminder

- = river kayak / canoe trail* **
- = shakopee riverfront cultural trail
- = proposed trail additions / connections

- = approximate areas of known and identified / documented cultural resources

- = restored floodplain forest
- = restored floodplain park
- = restored oak savanna



SATELLITE IMAGE SOURCE: ESRI & GOOGLE EARTH (NOTE: ESRI AERIAL FOR SCOTT COUNTY ENDS AT SCOTT COUNTY BOUNDARIES; AERIAL FROM GOOGLE EARTH HAS BEEN UNDERLAYED TO ILLUSTRATE GREATER CONTEXT OF SITE)

* = NEW ELEMENT TO RIVERFRONT; SEE HUBER PARK CONCEPT PLAN

** = NEW ELEMENT TO RIVERFRONT; SEE MEMORIAL PARK CONCEPT PLAN

MEMORIAL PARK RESTORATION

This rendering of an experience in Memorial Park was part of the vision for restoring the extensive oak savanna that once existed in this region. Working with the indigenous community, an interpretive and artistic Native American feature could serve as a new element characterizing the history and cultural significance of this area.



MEMORIAL PARK TRAILHEAD + GATHERING

This rendering proposes a group learning environment at the potential interpretive trail head kiosk and stone gathering area at the heart of Memorial Park. Surrounded by an extensively restored oak savanna, this node can act as a critical wayfinding spot as well as a place for gathering, learning, and storytelling.



HUBER PARK

Huber Park is the welcome mat of Shakopee; a critical green space where people can gather near downtown along the river for all types of events and celebrations. Though an amphitheater was recently constructed, there is great opportunity to expand upon the park's programming, navigate flooding, and create better connections.



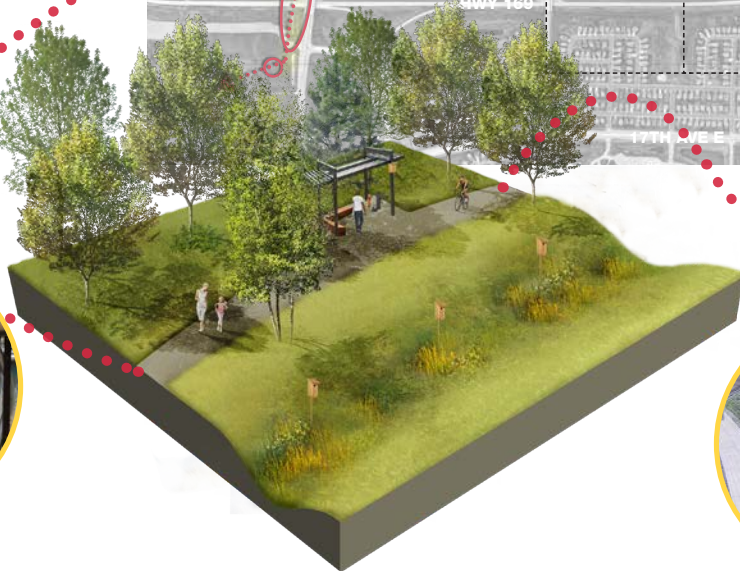
HUBER PARK CONT.

The proposed improvements to Huber Park include a new state-of-the-art playground, controlled naturalized storm and flood water areas that can be programmed with ice skating in the winter, a new vision for a Veteran's Memorial, replacing an underutilized parking lot with an art park, and safe touch points to the river.



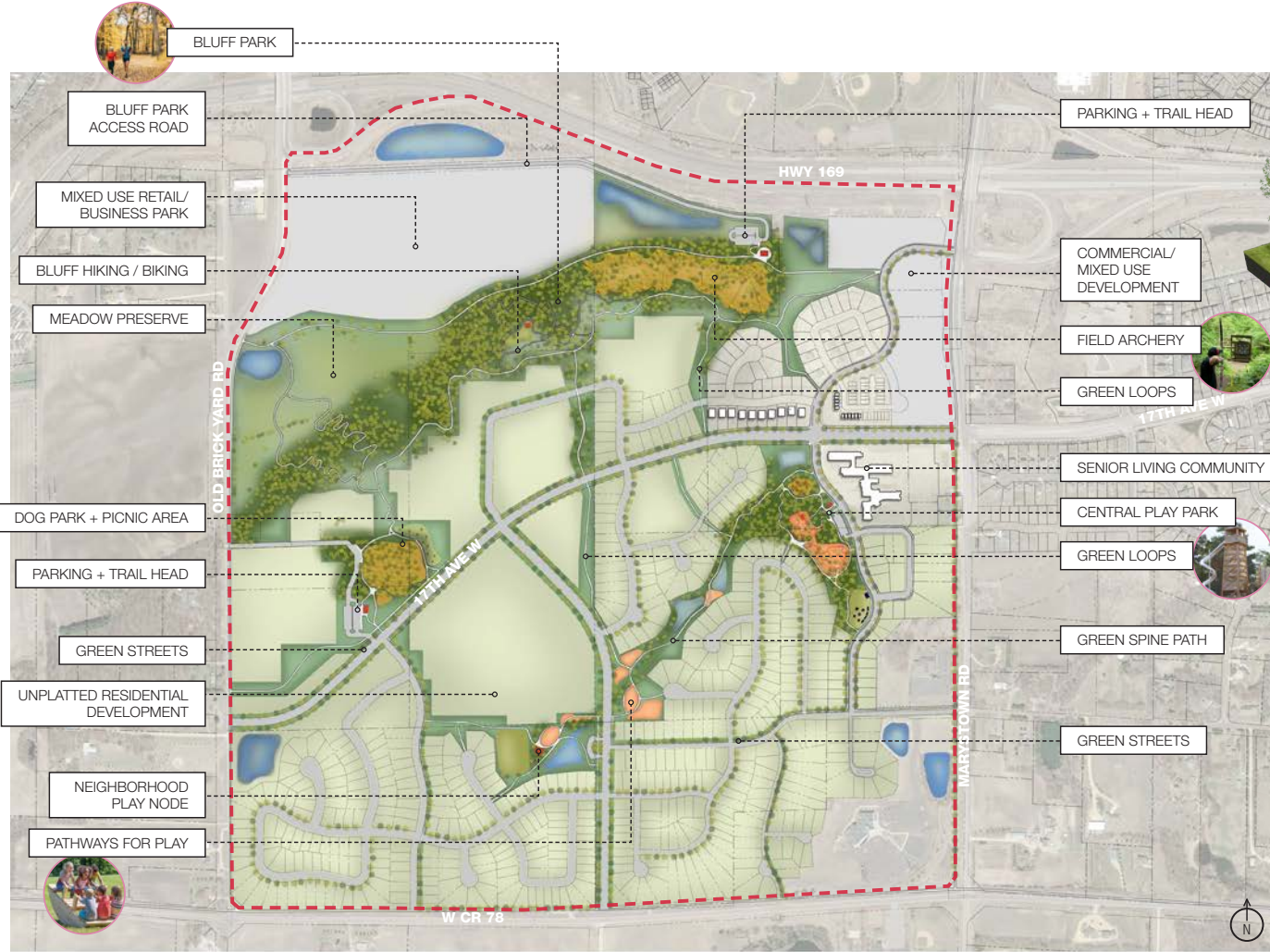
VIERLING GREENWAY

There is a highly under-visited trail through the core of Shakopee that follows a drainageway. This hot asphalt path slices through acres of turf for nearly 3 miles. The opportunity to re-vegetate this trail, create nodes of respite, and connections to the community to create a greenway is a very exciting component of the plan.



WINDERMERE PARKS

Windermere is a large new community currently under planning and development, presenting an exciting opportunity for the city to build a comprehensive and innovative green loop of parks and trails throughout the greater master development by connecting a Central Park to a naturally occurring bluff through a green spine that features play nodes and pocket parks.



A BRIGHT FUTURE FOR THE TYPICAL PARK

To provide guidance to the many other parks in Shakopee's system, a lens of adaptability and strategic replacement was applied for the typical neighborhood park. There are many of these smaller parks that feature, for example, the typical court and playground, but how can these spaces adapt ecologically and socially for future uses?



EQUIPMENT AND FACILITIES THAT SERVE AND ENGAGE ALL MEMBERS OF THE COMMUNITY FROM VARIOUS GENERATIONS AND BACKGROUNDS.



INNOVATIVE AND CHALLENGING PLAY STRUCTURES THAT CHALLENGE CHILDREN'S TYPICAL EXERCISE AND SKILL ROUTINES.



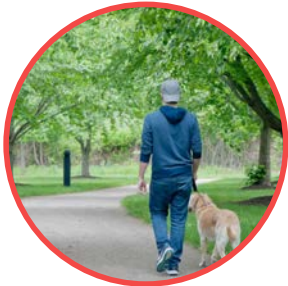
SENSORY PLAY EQUIPMENT TO EXCITE AND STIMULATE WITH CREATIVITY, LEARNING, AND EXCITEMENT IN THE PARKS.



FLEXIBLE, MULTI-USE AMENITIES TO SERVE VARIOUS NEEDS OF THE COMMUNITY AT DIFFERENT TIMES.



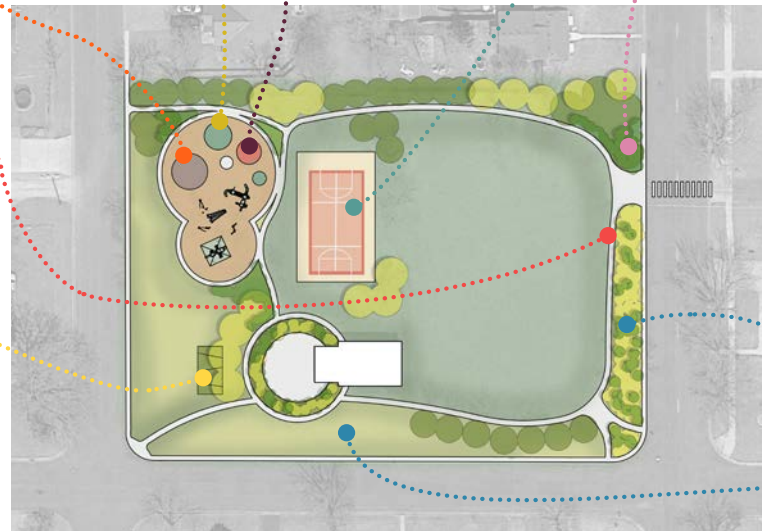
PLANTINGS AND LANDSCAPE THAT PROVIDES HABITAT AS MUCH AS POSSIBLE TO RE-STITCH TOGETHER A NATURAL AND NATIVE ENVIRONMENT FOR CRITICAL SPECIES.



LOOPED TRAIL SYSTEMS TO PROVIDE BETTER CONNECTIONS AND VARIED EXPERIENCES WITHIN THE PARK.



COMMUNITY GARDENS TO STRENGTHEN HEALTHY FOOD SYSTEMS AND FACILITATE COMMUNITY BONDING.



LOW-MAINTENANCE NATIVE PLANTINGS TO PROVIDE A MORE NATURAL EXPERIENCE FOR PARKS USERS AND REDUCE MAINTENANCE REQUIREMENTS.

IMPLEMENTATION

The final chapter lays out a timeline & steps for capital improvements park-by-park, guidance for funding/revenue strategies, potential private/public partnerships, and provides key recommendations for operations and maintenance of the system moving forward. Quarry Lake Park Mountain Bike Trail is a key example of a park plan shifting into implementation based on the Master Plan tools.

KEY RECOMMENDATIONS | PUBLIC WORKS - PARKS DEPARTMENT STAFFING

In general, the Public Works Department is meeting the level of quality expectations, while being understaffed for a park system of Shakopee's size. This is concerning as the city continues to grow and develop more park land acreage and trail mileage.

» **Currently Public Works-Parks Maintenance Staff has (9) FT Maintenance staff** (9 x 2080 = 18,720 hours + 12 Summer Seasonal Staff that work 1000 hours a year = 12,000 hours and combined totals 30,720 hours divided by 2080 = 14.76 FTE). Based on this staffing level of 14.76 FTE's this group ideally should be maintaining 413 acres or park property based on 28 acres per FTE (14.76 x 28 acres per person=413 acres).

» For Public Works-Parks Maintenance Department Staff to achieve one FTE for every 28 acres of maintained parks based on 766 acres **that exist today would require 27 FTE's or an additional 12 FTE's** (combination of FT and Summer Seasonal Staff) if they adopted this standard. This is likely not financially attainable, but it does demonstrate the level of stress of expectations this group is managing by now under the current operational model. Ideally the staffing changes will be driven by customer satisfaction needs and the city's operational budget capacity but certainly **park maintenance budget is underfunded by at least \$800,000.**

Ideally, the Public Works-Park Maintenance positions that could be made available would be a combination of Full and Summer Seasonal Crew that would include:

- » (1) Park Superintendent
- » (4) Four Park Supervisors to include a Forestry Supervisor, Sports Fields Supervisors, Neighborhood and Community Parks Supervisor and Landscape Streetscape Supervisor
- » The makeup of Crews would include:

» Two crews of (3) maintenance workers for City Sports Fields management and care as well as school district fields and care:

» One crew of (3) people for Downtown parks, streetscaping and park landscape maintenance;

» One (2) person crew for forestry and tree planting;

» Two (3) person crews for neighborhood parks and two (3) person crew for regional parks and community parks. This crew will take care of trails in their respective parks;

» One (3) person natural resource management crew that will manage trails and natural areas;

» One Crew of (2) people for irrigation system maintenance;

» One crew of (3) people for fixing vandalism, clean up and fix up of site amenities such as restrooms and playground inspection requirements and outdoor facilities on park sites.

» (1) person for small Equipment mechanic to support the public works parks maintenance department. PROS understands that there is an equipment repair shop for maintaining trucks, mowers and specialty equipment for the Parks Maintenance Department now.

» Additionally, public works park maintenance staff provides snow removal for the city.

» Some positions could be outsourced such as landscaping, streetscaping, irrigation management, and forestry which would reduce this recommendation substantially. There would still be a cost but not require city personnel to do the work, but inspection responsibilities would still need to be added to the work required if outsourced.

» The potential for partnerships with partners such as the SMSC and Three Rivers Parks District is significant, especially for natural resource management goals and vision found in this master plan.

A total of a combination of 39 Full-time and Seasonal Summer staff combined is needed based on a 28 acres per employee goal.

KEY RECOMMENDATIONS | PARKS AND RECREATION DEPARTMENT STAFFING

In terms of the Recreation and Parks Department Staff, the existing maintenance staff of the community center, aquatic centers and ice rinks is meeting expectations. The only position with a potential need is an aquatic facility maintenance manager for both indoor and outdoor aquatic facilities.

KEY RECOMMENDATIONS | OVERALL

The following recommendations were identified by the consultant team and apply to the operations and maintenance issues and opportunities for the park, trails, and recreation system moving forward:

» Both the Public Works-Parks Maintenance Department and Parks and Recreation Department staff should establish operating performance measures to demonstrate how efficient they are as well as how productive they are. These could include the following performance measures:

- » Direct and indirect costs associated with programs, facilities and maintenance costs
- » Cost recovery by type of park and type of recreation center
- » Cost per person for a special event, pool experience or outdoor ice hockey experience
- » Cost per visit to a community center, indoor ice rink, indoor pool
- » Cost per acre to maintain a park, cost per linear mile to maintain a trail, cost per sports field
- » Cost per mile of street median
- » Maintenance cost per capita
- » Revenue per square foot of program space in a community center

KEY PROJECT TIMELINE AND PHASING RECOMMENDATIONS

WINDERMERE CENTRAL PARK, BLUFF PARK, TRAIL NETWORK

- » **2020**
Community driven park design for Central Park and trail connections. Stub in basic park infrastructure and main park entries.
- » **2021**
Central Park improvements including playground, parking, picnic areas, trail connections as shown in Chapter 4.
- » **2022**
Pathways to play trail and play nodes along trail as shown in Chapter 4. Development pending.
- » **2023**
Complete main portion of trail network/ loop at the top of Bluff Park, connecting to Central Park and the Pathways to Play loop as shown in Chapter 4.
- » **2024-2035**
Community driven park design and implementation of Bluff Park elements including additional trails and overlooks, dog park, archery course, landscaping and restoration, etc. as shown in Chapter 4.

QUARRY LAKE PARK

- » **2020**
Single track mountain bike trail design/ build - approximately 4-6 miles of track. Minor roadway and parking area improvements.
- » **2021**
Roadway and parking area improvements, water ski viewing area improvements. Additional trail mileage and/or skills course near parking area.
- » **2022**
Canoe/ kayak/ adventure beach improvements at North side of lake as shown in Chapter 4.
- » **2023**
Gravel or natural surface loop trail around lake.
- » **2024-2035**
Implementation of additional park amenities as shown in Chapter 4 - playground, picnic gathering structure, restroom, etc.

- » Fo
- » St
- » To
- » Pe
- » Pr
- » Pr
- » Sh
- » Pa
- » Ma
- » ba
- » Cu
- » aq
- » Vo
- » Me
- » Re
- » St
- » Sp

» Rate of park maintenance in the system and what it cost to maintain a standard. This should also support drive time costs and the city continues to grow.

» Re-establish the forester position and tree crew members within the Public Works Parks Maintenance Department. This will allow ongoing tree inspections, preventative maintenance, and city-wide canopy management and tree planting to occur.

» Develop a tree replacement program for the city based on a diverse balance of tree types throughout the city.

